

# Step Lights



HL-1173



HL-1174



HL-1032



HL-1166



HL-1161



HL-1157



HL-1171



HL-1167



HL-1040



HL-1164



HL-1169



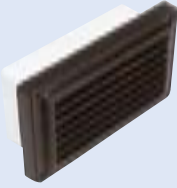
Code No.	Width	Height	Extension	Recess Depth	Lamp	Description
HL - 1032	195	135	40	-		Cast Aluminium Lighting Fixtures, Stainless Steel Screws, Corrosion and UV Ray Resistant Coating, Rubber Gasket.
HL - 1040	195	135	40	-		
HL - 1157	Ø120	-	30	125	1x12V/20w Dichroic Halogen	
HL - 1161	205	110	48	60	1x25w Candle Lamp	
HL - 1164	220	220	-	100	1x60w GLS	
HL - 1166	245	100	25	60	1x9w TC-S	
HL - 1167	Ø95	-	50	-	1x12V/20w Halogen	
HL - 1169	85	80	55	-	1x12V/50w Halogen	
HL - 1171	Ø95	-	45	-	1x12V/20w Halogen	
HL - 1173	220	195	18	85	1x26w TC-D	
HL - 1174	220	195	70	85	1x26w TC-D	

• All sizes are in mm

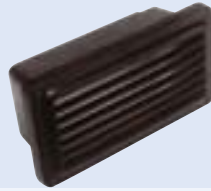
Note: HL-1166,HL-1161,HL-1157 - CRC Back Housing, HL-1173, HL-1174,HL-1161- Acrylic Diffuser, HL-1032,HL-1040,HL- 1166,HL-1169, HL-1167,HL- 1171 - Glass Diffuser, HL-1157 - Toughened Glass Diffuser, HL-1164 CRC Lighting Fixture, HL-1032,HL-1040,HL-1164 for Indoor use only.

# HOMDEC Step Lights

HL-1154 with Housing



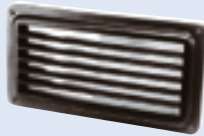
HL-1151 with Housing



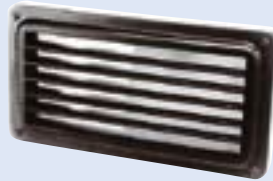
HL-1176



HL-1154



HL-1151



HL-1177



HL-1156



HL-1153



HL-1178



HL-1155



HL-1152



HL-1179



HL-1158



HL-1159



Code No.	Width	Height	Extension	Recess Depth	Lamp	Description
HL - 1151	270	145	25	70	1x60w GLS/ 18w TC-D	Cast Aluminium Lighting Fixtures, Stainless Steel Screws, Corrosion and UV Ray Resistant Coating, Toughened Glass Diffuser, Rubber Gasket.
HL - 1152	270	145	25	70	1x60w GLS/ 18w TC-D	
HL - 1153	270	145	25	70	1x60w GLS/ 18w TC-D	
HL - 1154	215	135	25	45	1x60w GLS/ 13w TC-D	
HL - 1155	215	135	25	45	1x60w GLS/ 13w TC-D	
HL - 1156	215	135	25	45	1x60w GLS/ 13w TC-D	
HL - 1158	225	125	15	65	1x18w TC-D	
HL - 1159	225	125	36	65	1x18w TC-D	
HL - 1176	325	185	20	70	2x11w TC-S	
HL - 1177	270	145	25	70	1x60w GLS/ 18w TC-D	
HL - 1178	260	75	10	93	1x18w TC-D	
HL - 1179	260	75	10	93	1x18w TC-D	

Note: HL-1154, HL-1155, HL-1156, HL-1176 - CRC Back Housing, HL-1158, HL-1159 - Glass Diffuser. HL-1178/HL-1179- Polypropylene Console

• All sizes are in mm